




Rivercare Group Te Wai o Pareira

Deputation to the Henderson Massey Local Board
November 2023

Objective

1. Awareness of the Board of our activities
 2. Support from the Board for:
 - a. Changes to the Te Atatu Peninsula Stormwater Project
 - b. Mātauranga Māori - place awareness programme in schools
- 

What we have been up to

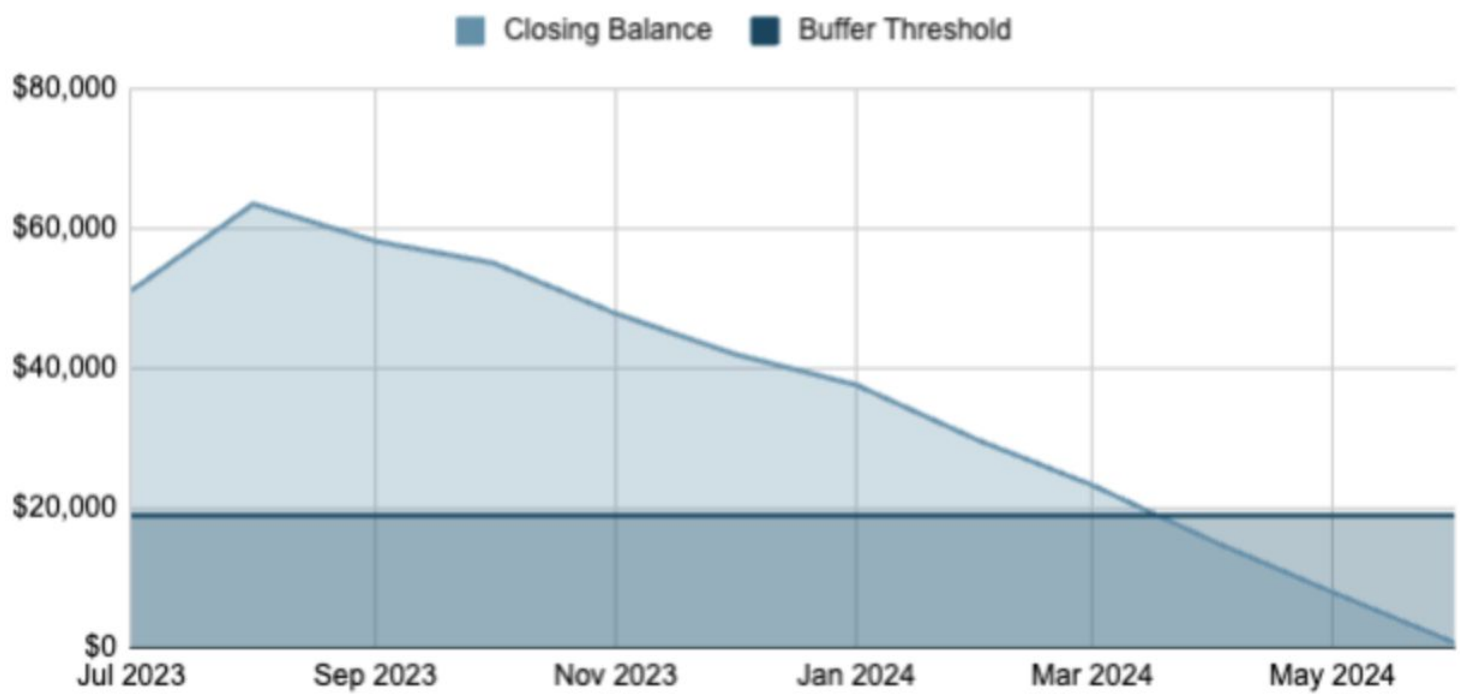
- **New Personnel, trustees and crew**
- **Te Atatu Peninsula Stormwater Project**
- **Community Engagement**
- **Public Meetings**
- **Sewage network overflow advocacy**
- **Tawa Esplanade restoration**
- **Taipari Strand Closed Landfill - Tidal surge 31 October 2023**

UPDATE



23-24 Cash Flow Forecast - Confirmed Funding Oct 23

Closing Balance and Buffer Threshold



Te Atatu Peninsula

Te Atatu Peninsula Stormwater Project

Concerns

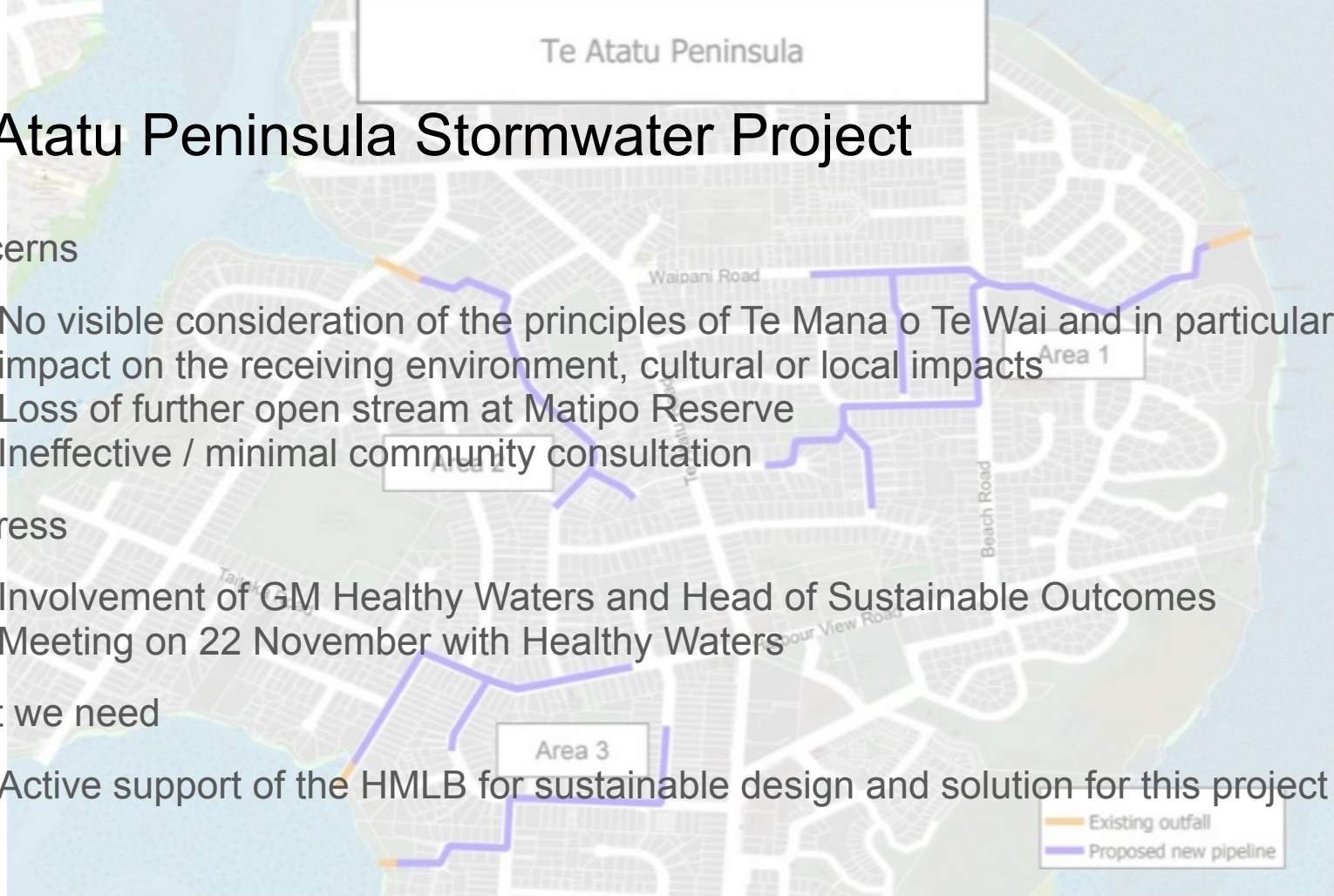
- No visible consideration of the principles of Te Mana o Te Wai and in particular the impact on the receiving environment, cultural or local impacts
- Loss of further open stream at Matipo Reserve
- Ineffective / minimal community consultation

Progress

- Involvement of GM Healthy Waters and Head of Sustainable Outcomes
- Meeting on 22 November with Healthy Waters

What we need

- Active support of the HMLB for sustainable design and solution for this project



Community Engagement

Long term change to connection to local environment

- Changes to attitudes and values
- Understanding of the connectedness from actions to impacts

What we are doing

- Community engagement with children / young people
- Partnership with schools and Community Waitakere
- Connecting to the environment



Public Meetings

Two public meetings held

1. Matariki and mātauranga
2. Urban Flooding

Overall attendance of over 70 people

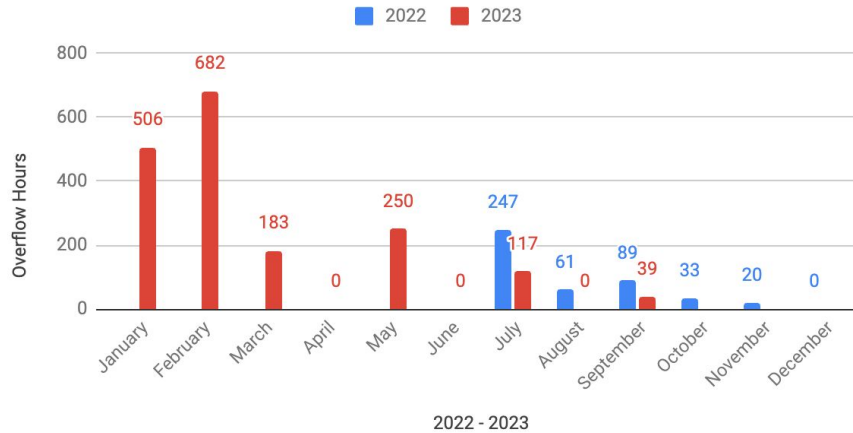
Positive feedback from both meetings



Sewage Overflow Advocacy

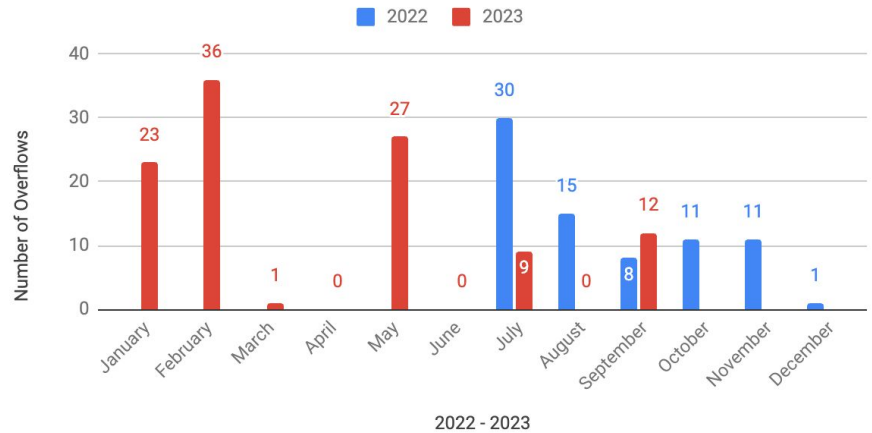
Wastewater Overflow Hours per Month

Includes monitored overflow points only (8 of 12)



Number of Wastewater Overflows by Month

Includes monitored overflows only (8 of 12)



Tawa Esplanade Restoration



Tawa Esplanade challenges



Taipari Strand Landfill Tidal Surge

